



Giving people the public goods they demand

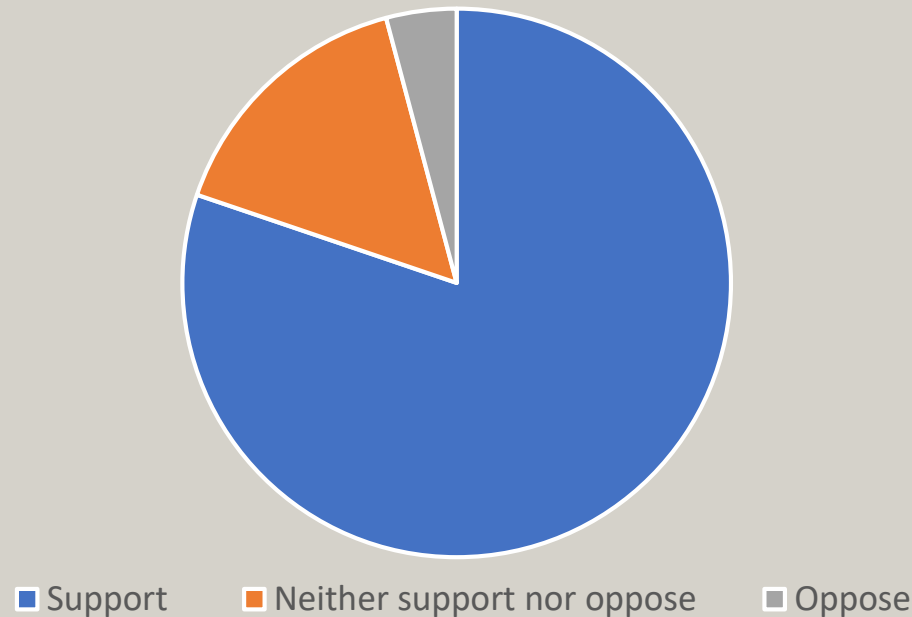
Delivering social and environmental
benefits from land use

Anna Brand, Land Use Policy Officer

SRUC Biennial Land Use Conference, November 28, 2018

What do people want?

Scottish Environment LINK survey:
To what extent would you support or oppose
farmers having to prove that they are
helping reduce climate change and other
environmental impacts of farming? N=1033
people



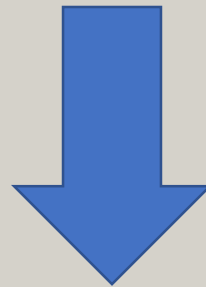
Delivering for people and the environment?

Species declines (1994-2016):

- Kestrel ↓ 85%
- Lapwing ↓ 63%
- Curlew ↓ 62%



What should drive a future policy?



Future agricultural and land use policy

What should a future policy look like?

Category 1

Public Goods delivery

Category 2

Investments to facilitate change

Category 3

Advice, facilitation and training

Paying for public goods

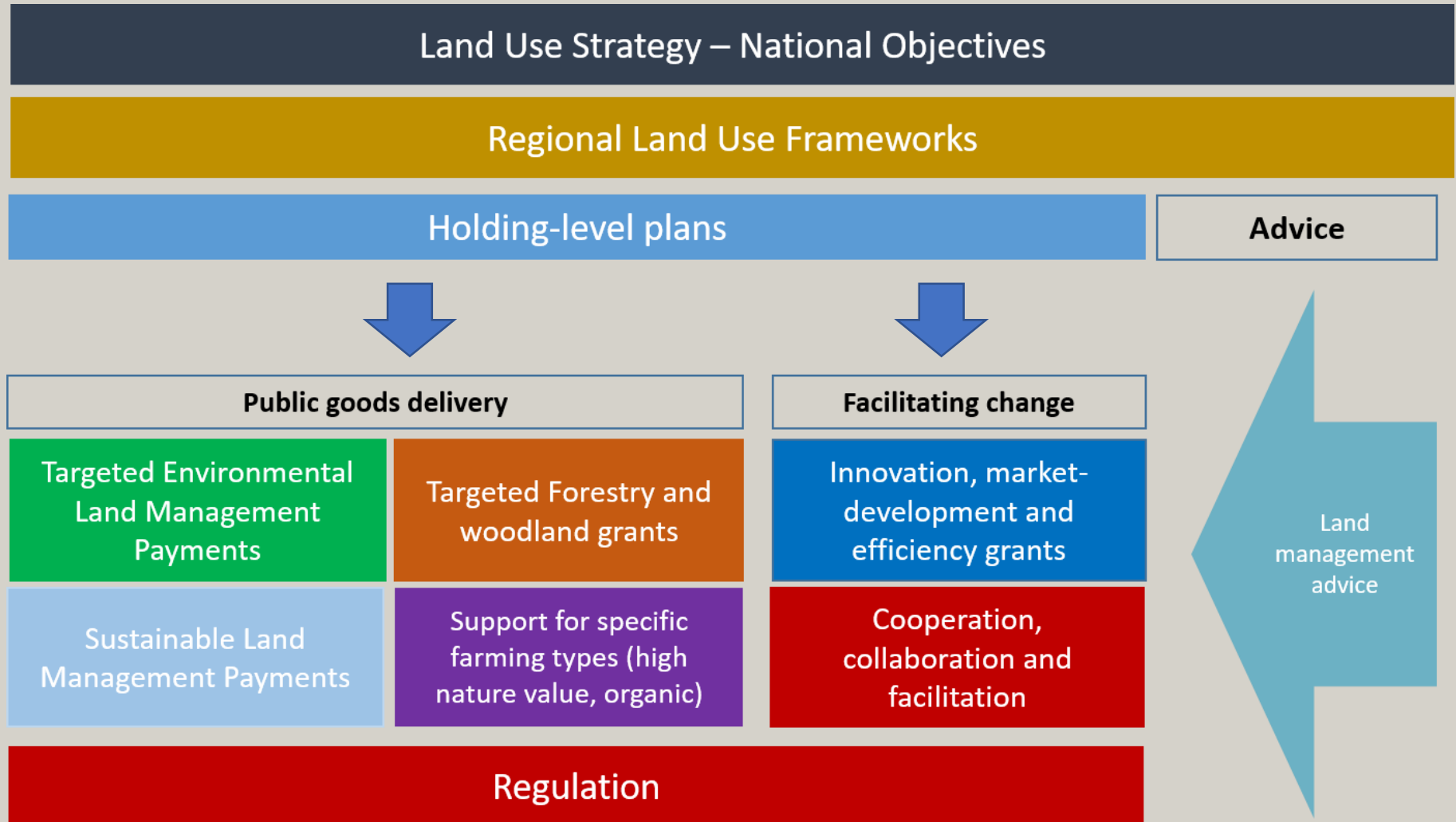
Public good	Snapshot of interventions
Carbon Storage	e.g. Well-managed soils, peatlands, and forests
Supporting biodiversity	e.g. Fieldmargins, good grazing and mowing, diverse forest management
Enhancing soil organic matter	e.g. Preventing erosion, low or no-till
Ensuring water quality	e.g. Water margins, low input techniques
Maintaining ecosystem services	e.g. Support pollination, flood management
Access and recreation	e.g. paths and signs

Assessing the costs of environmental land management (£m)

Summary of overall annual costs of meeting environmental land management priorities, based on current costs (£m)					
	England	Northern Ireland	Scotland	Wales	UK
Priority habitats	471	32	252	120	876
Boundary features	255	46	65	35	402
Historic environment	41	3	40	7	92
Arable land	403	14	40	5	461
Grassland	164	80	56	32	331
Organic	17	0.5	3	5	26
Total	1,352	176	456	205	2,188

Source: Rayment, M. (2017). *Assessing the costs of Environmental Land Management in the UK*. Report for RSPB, National Trust and The Wildlife Trusts, 2017. Online. Available from: <https://www.nationaltrust.org.uk/documents/assessing-the-costs-of-environmental-land-management-in-the-uk-final-report-dec-2017.pdf>

What should a future policy look like?





giving
nature
a home

Scotland

The RSPB is the country's largest nature conservation charity, inspiring everyone to give nature a home.

The RSPB is part of BirdLife International, a partnership of nature conservation organisations working to give nature a home around the world.

